

Scope of Practice Decision Algorithm

The Commission on Dietetic Registration (CDR) Scope of Practice Decision Algorithm provides a process for self-evaluation to determine if a desired activity (i.e., role, service, or intervention) is within a RDN's or NDTR's individual scope of practice by answering a series of questions. The algorithm is designed to allow a RDN or NDTR to critically evaluate their knowledge, skills, experience, and demonstrated and documented competence using criteria resources.

Prior to using the Scope of Practice Decision Algorithm, it is recommended to investigate the activity by obtaining information on the knowledge, skills, necessary training, and certifications, if required, expected to demonstrate qualifications. This review will also assist in responding to the below questions. Documents and resources useful for review include:

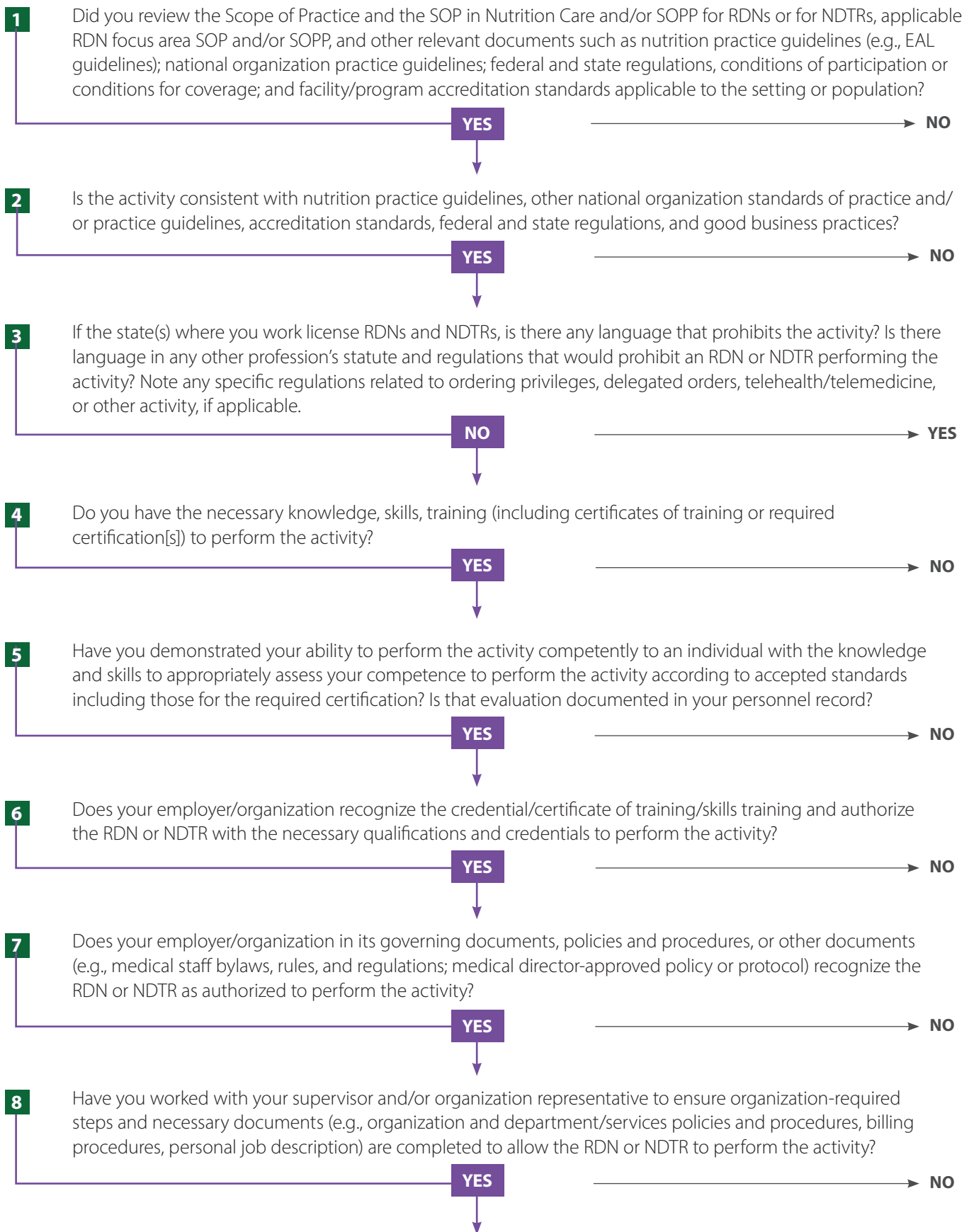
- **Scope of Practice** (for the RDN or for the NDTR)
- **Standards of Practice (SOP) and Standards of Professional Performance (SOPP)** (SOP in Nutrition Care and SOPP for RDNs or for NDTRs; Focus Area Standards for RDNs consisting of 17 publications such as Nutrition Support, Adult Weight Management, Oncology Nutrition, Sports Nutrition and Dietetics, Diabetes Care, Pediatric Nutrition)
- **Accreditation Standards** (TJC, DNV GL, ACHC formerly known as HFAP, CoC)
- **Laws and Regulations**
 - [Licensure](#)
 - [Ordering Privileges and Diet Orders](#)
 - [Telehealth](#)
- **Academy Dietetic Practice Groups (DPGs)**
- **Practice Tips and Case Studies**
- Nutrition Practice Guidelines (e.g., **Academy Evidence Analysis Library** [EAL])
- Certificates of Training Programs (**CDR, Academy**, or other national or professional organization[s])
- **Definition of Terms List**

Use the Scope of Practice Decision Algorithm on page 2. If the Algorithm assists in identifying the activity is within your individual scope of practice, complete the following before performing the activity:

- Ensure the activity is included in your job description
- Verify personnel file contains documentation of education, training, credentials, if applicable, and evaluation of competence
- Check that activity is approved/included in applicable official facility/organization documents, e.g., medical staff bylaws, rules and regulations, human resource-related policies
- Investigate your organization's liability insurance coverage; decide on the need for additional personal liability insurance or review your current personal plan to determine appropriate coverage
- Identify if activity is a Medicare or private insurer covered service and reimbursable when performed by a RDN or NDTR

DISCLAIMER: This algorithm does not constitute medical or other professional advice, and should not be taken as such. The information presented is not a substitute for the exercise of professional judgment by the RDN or NDTR, but rather an exercise in evaluation by the individual practitioner and/or their organization. The algorithm is not intended for disciplinary actions, or determination of negligence or misconduct. The Academy and CDR are not responsible for an individual RDN's or NDTR's actions or omissions based on the use of the algorithm. The use of the algorithm for any other purpose than that for which it was formulated must be undertaken with the sole authority and discretion of the user, and the user agrees to release and indemnify the Academy and its employees and agents from any liability arising from use of the algorithm.

Scope of Practice Decision Algorithm



This activity is within your individual scope of practice.